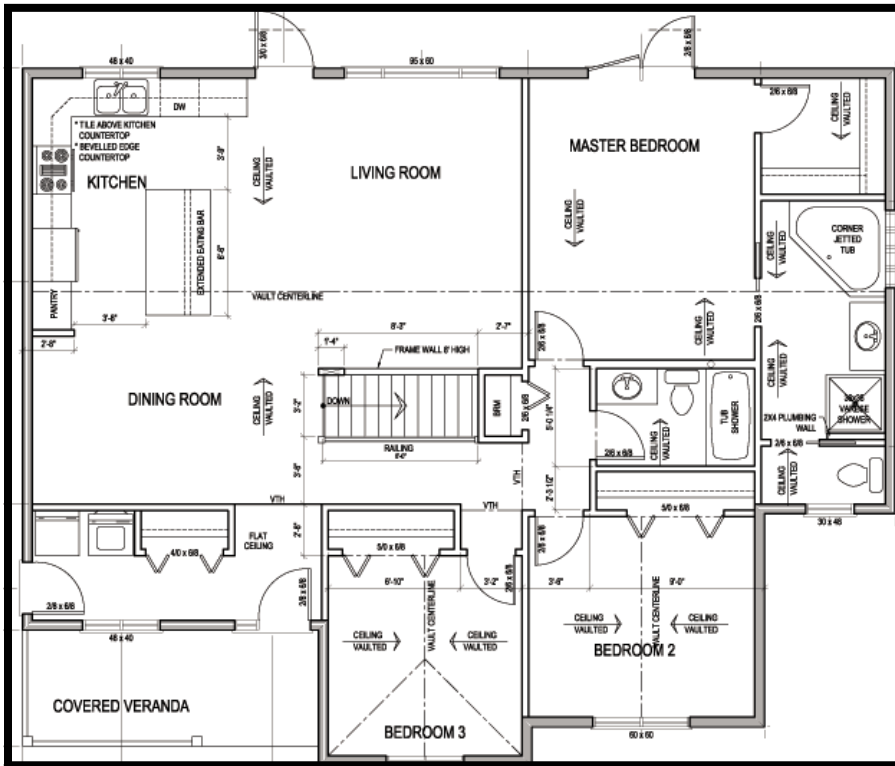


Aspen Showhome (with mud/laundry)



This home has amazing visual appeal in both the exterior and the interior. The open concept make the home perfect for entertaining. Enjoy the view from the front veranda or relax in the expansive ensuite corner jetted tub. The vaulted ceilings through this home gives it a feeling of spaciousness.

Information:

Style:	Bungalow	Living Room:	14'8" x 13
Size:	1401 sq ft	Kitchen:	13' x 14'
Dimensions:	45' x 36'	Dining Room:	9'6" x 15'3"
Price:	\$162,000	Bedroom:	14'8" x 11"
		Bedroom:	10' x 9'7"
Available:	Oct. 1/08 (Approx. date)	Bedroom:	10' x 9'
		Main Bathroom:	4 pc.
		Bathroom:	4pc.
Veranda:	14' x 6'	Laundry/Mud	6'6" x 15'3"

Note: Pictures are from previous Showhomes, colors and options will vary.



Steve Squires
Home Consultant

Wainwright Division
2501 - 14th Avenue
Wainwright, AB T9W 1V7
Office: (780) 842-4870
Fax: (780) 842-2150
Cell: (780) 842-7075
E-mail: steve@jandhhomes.com
web: www.jandhhomes.com